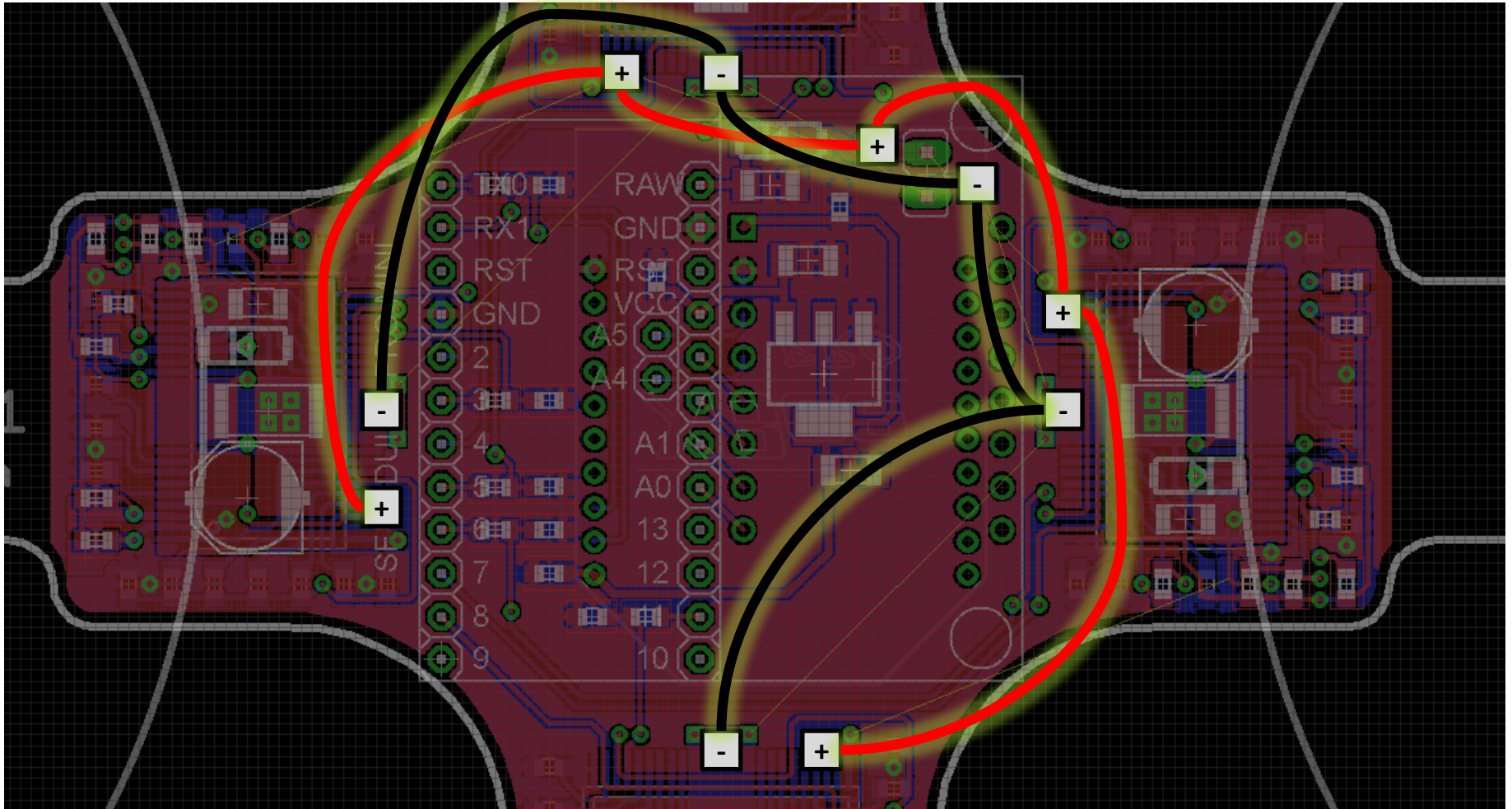
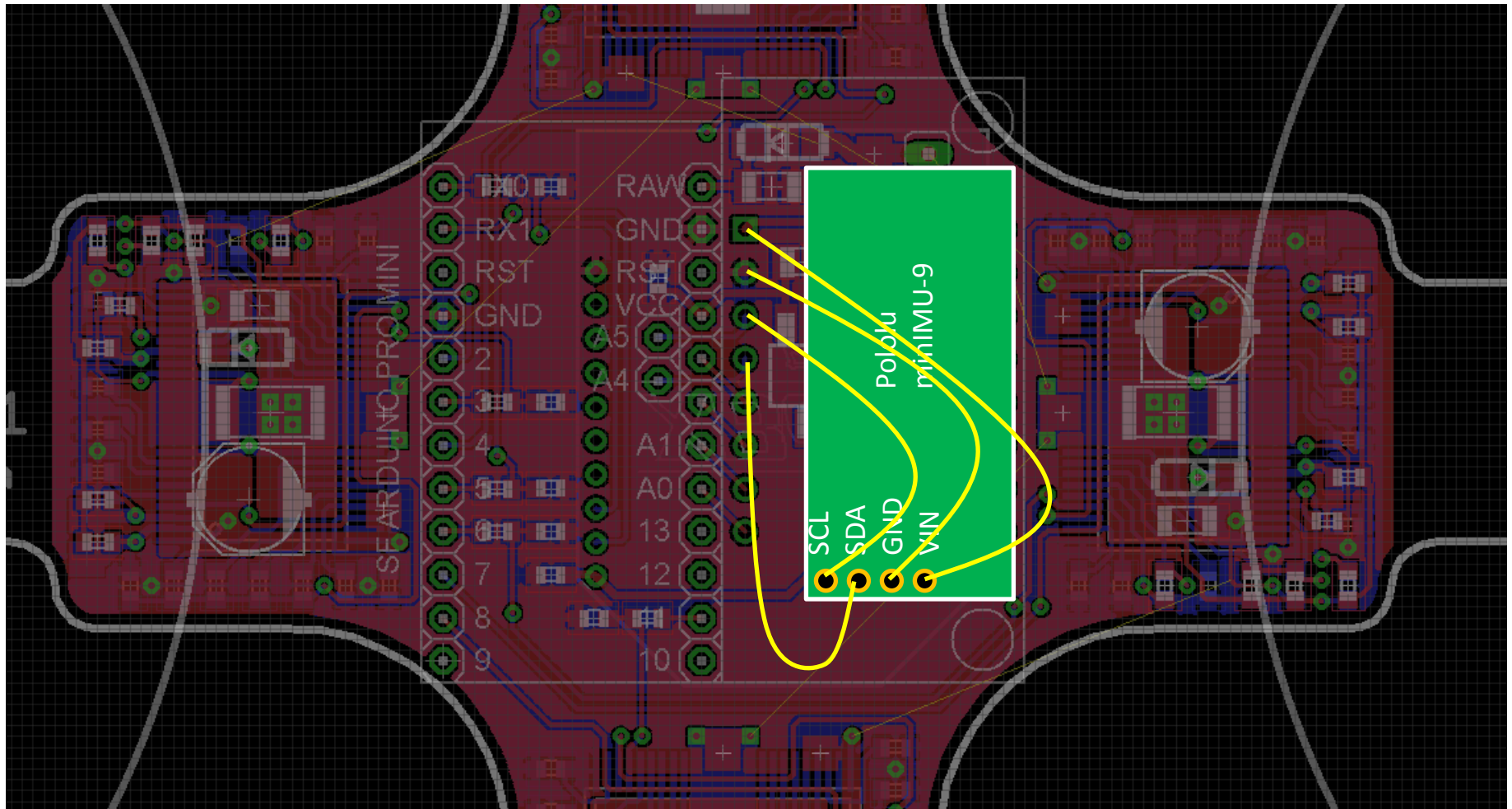


## External Power Wiring



Note: Carries up to 6A. Use 22AWG or larger.

## Sparkfun Razor IMU → Pololu minIMU-9 Conversion “Hack”



Note: To minimize mechanical vibration:

1. Mount IMU on foam tape.
2. Use long, thin, stranded wire.

See 4pcb\_IMU.jpg.